

REV.	DESCRIPTION	DATE
A	RELEASE	JAN 18, 2019

MATERIALS

1. HOUSING : THERMOPLASTIC (UL 94V-0).
2. TERMINAL, CAM PLATE: COPPER ALLOY,
PLATING : GOLD PLATED OVERALL .
3. SHELL : STAINLESS STEEL.
PLATING : NICKEL PLATED OVERALL.
4. CAM STICK,SPRING,STOPPER: STAINLESS STEEL.

SPECIFICATION

1. CURRENT RATING : 1 A. MAX.
2. DIELECTRIC WITHSTANDING VOLTAGE :
500V AC R.M.S. FOR 1 MINUTE.
3. INSULATION RESISTANCE : 1000MΩ MIN.AT 500V DC.
4. CONTACT RESISTANCE : 30mΩ MAX.
5. OPERATING TEMPERATURE : -20°C TO +70°C.
6. MATING CYCLES: 3,000 Insertions

PART NUMBER INFORMATION :

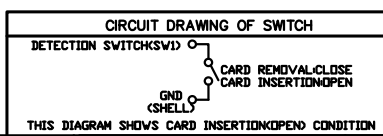
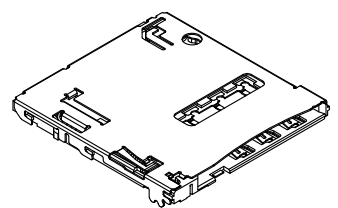
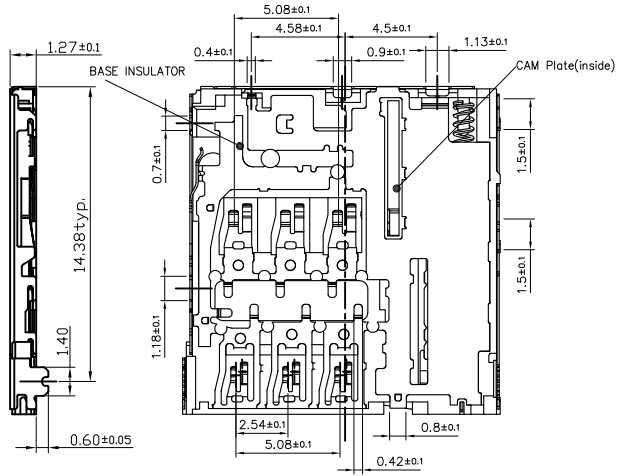
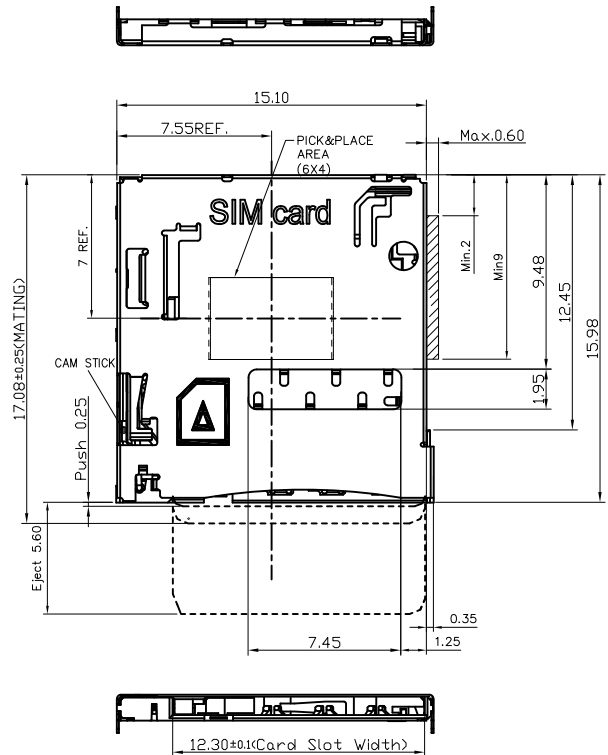
5100106-01157S-R

SERIES CODE | SMT 90° | SMI CARD | SINGLE TYPE | NUMBER OF POSITIONS

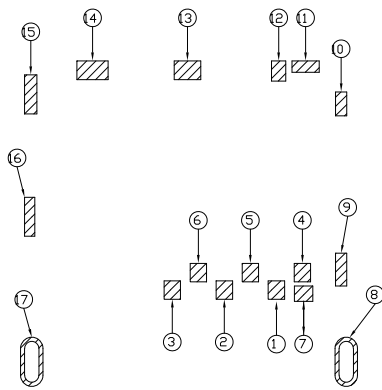
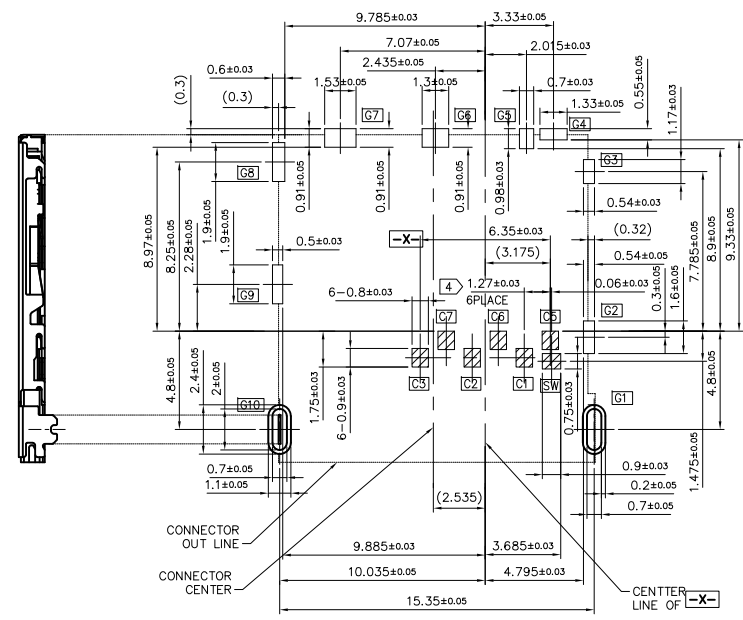
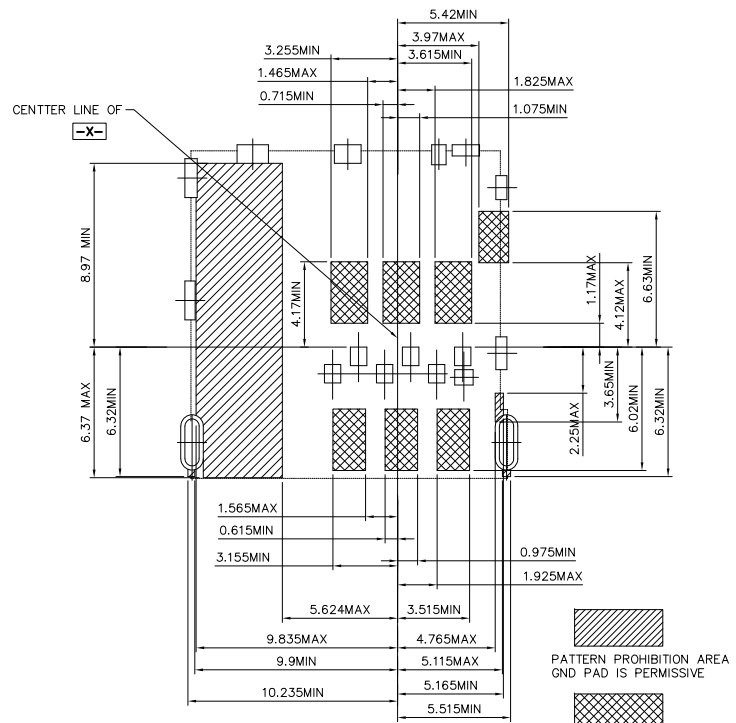
R:RoHS
H:HALOGEN FREE
FOLLOW NUMBER
WITH PUSH
INSERT TYPE
PLATING SEE TABLE

DESCRIPTION OF PLATING ON TERMINALS			
NO.	EXPLAIN	NO.	EXPLAIN
0	GOLD FLASH	3	GOLD 15u"
1	GOLD 5u"	4	GOLD 20u"
2	GOLD 10u"	H	G/F + TIN'

TOLERANCE .0=±0.25 .00=±0.15 .000=±0.05 ANG.=±3°	DRAWER 2/1 CHECK 2/1 APP'D 2/1/20	INMO 东莞市英墨电子有限公司 INMO Electronics Co.,Ltd
	PRODUCT SPEC. —	
UNITS : mm SCALE NONE SIZE A7 SHEET 1 OF 3 REV. A	DRAW NO. R5100106-01157S-R	



REV.	DESCRIPTION	DATE
A	RELEASE	JAN 18, 2019



[Connector Pin Assignments]

No.	Pin name	Description
①	C1	Vcc of SIM
②	C2	RST of SIM
③	C3	CLK of SIM
④	C5	GND of SIM
⑤	C6	Vpp of SIM
⑥	C7	I/O of SIM
⑦	SW	Detection Switch
⑧-⑬	GND	Shell Ground

TOLERANCE
 .0=±0.25
 .00=±0.15
 .000=±0.05
 ANG.=±3°



SCALE NONE SIZE A7

DRAWER
 221
CHECK
 221
APP'D
 221
PRODUCT SPEC.
 —

SHEET 2 OF 3 REV. A

INMO
 东莞市英墨电子有限公司
 INMO Electronics Co.,Ltd

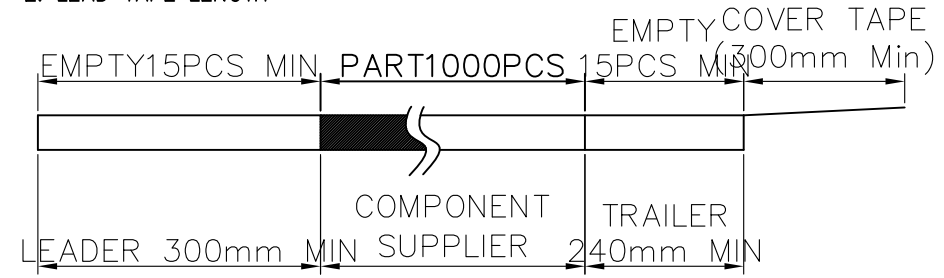
NAME
 MICRO SIM 6 PIN PUSH
 有偵測PIN 1.32H.

DRAW NO.
 R5100106-01157S-R

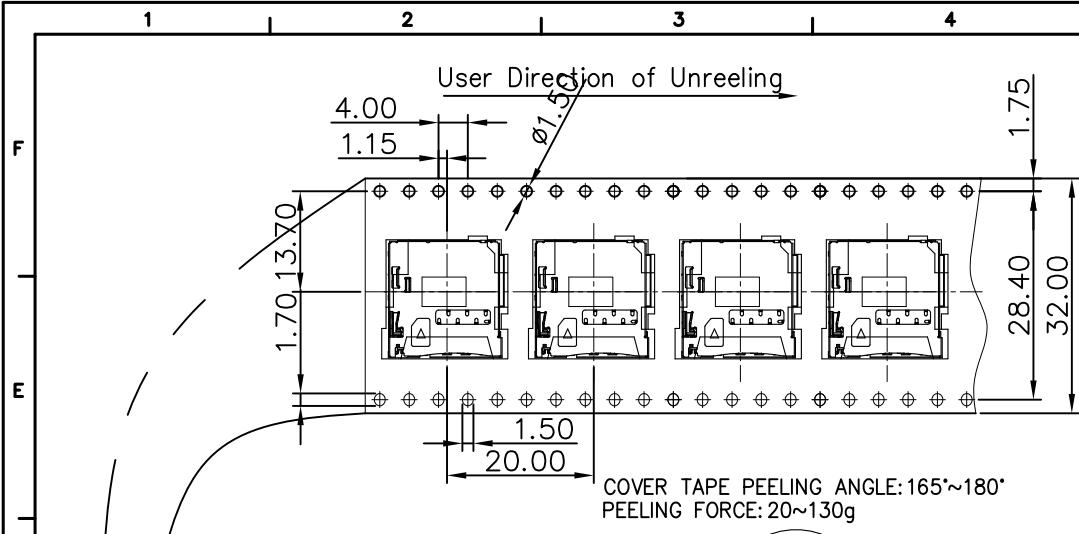
REV.	DESCRIPTION	DATE
A	RELEASE	JAN 18, 2019

NOTES

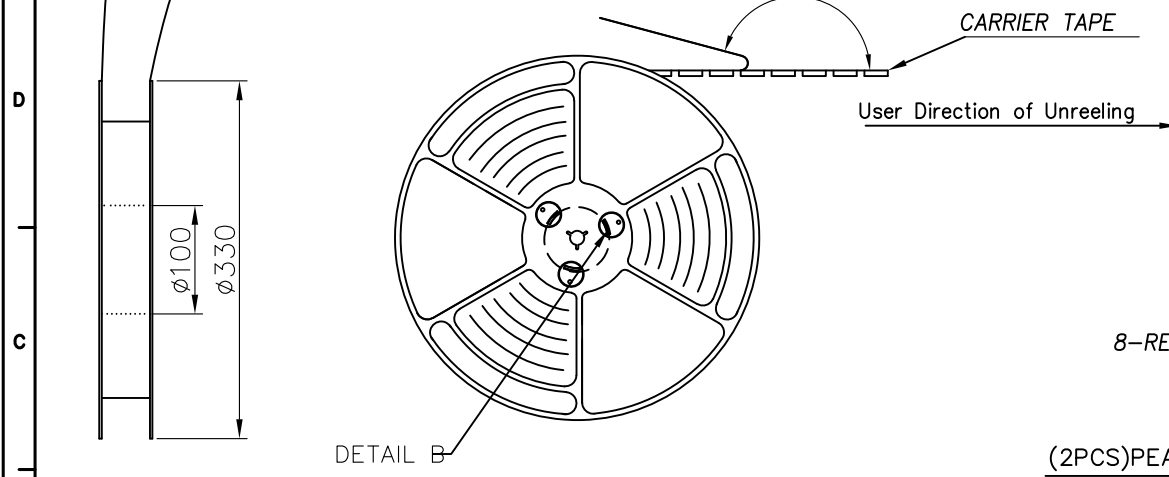
1. NUMBER OF CONNECTORS: 1000 PCS/REEL
2. LEAD TAPE LENGTH



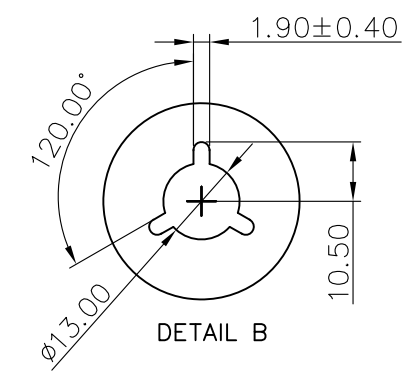
3. QUANTITY: 7000PCS/CARTON
4. WEIGHT :
THE NET WEIGHT OF PER PART IS 0.38g.



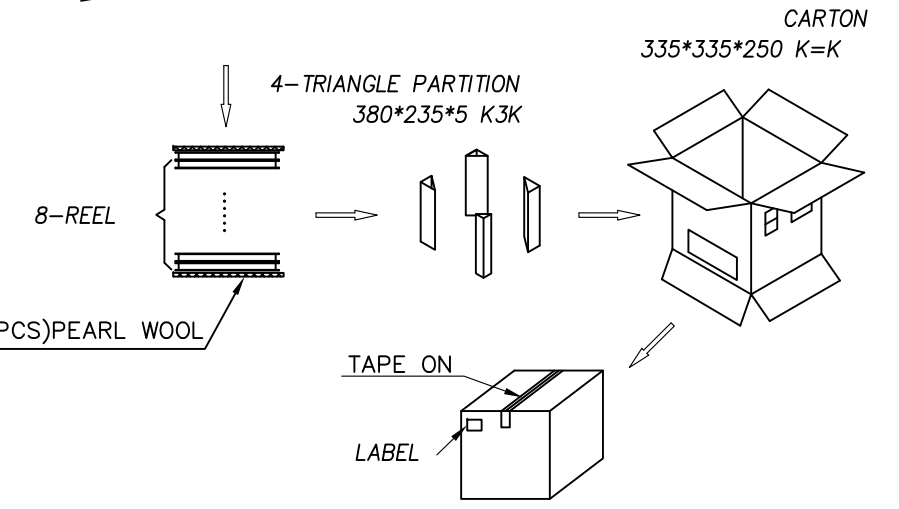
COVER TAPE PEELING ANGLE: 165°~180°
PEELING FORCE: 20~130g



DETAIL B



DETAIL B



TOLERANCE .0=±0.25 .00=±0.15 .000=±0.05 ANG.=±3°		DRAWER 221 CHECK 221 APP'D 221/221		INMO 东莞市英墨电子有限公司 INMO Electronics Co.,Ltd	
UNITS : mm		PRODUCT SPEC. —		NAME MICRO SIM 6 PIN PUSH 有侦测PIN 1.32H.(包装图)	
SCALE NONE	SIZE A7	SHEET 3 OF 3	REV. A	DRAW NO. R5100106-01157S-R	